



# Instructions

Microsoft Outlook 2003

This manual is written for users who already have an e-mail account configured in Outlook 2003 and will therefore only focus on how to change the SMTP server. **Important note:** Make sure you have Office 2003 SP2 (Service Pack 2) installed.

In this manual you will find a walkthrough to quickly and easily configure your email software for the usage of Travel SMTP.

You will also find extra information of all possible configuration options.

## **IMPORTANT:**

Before changing your settings and using the Walkthrough, please read caption "Possible configurations" first and chose what port number and corresponding SMTP you are planning to use.

## **Table of contents**

<b>Register extra email addresses to your Travel SMTP account.....</b>	<b>2</b>
<b>Guide &amp; Walkthrough .....</b>	<b>3</b>
<b>Tip for domain name owners.....</b>	<b>6</b>
<b>Possible configurations (port numbers &amp; encryptions) .....</b>	<b>7</b>

# How to register extra email addresses to your Travel SMTP account

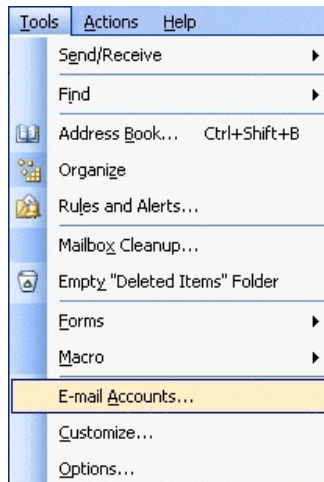
To prevent people from sending email messages from email addresses they do not own (anti spam policy), all email addresses you use with Travel SMTP need to be registered and validated. The email address you used during your registration is automatically validated and ready to use. All other email addresses that you use can be registered to your Travel SMTP account by logging into our website:

<https://www.travelsmtp.com/s/login.php>

You can also go to the website's main page and then click on "**Login**" at the right top of the window. After you are logged in, go to "**Senders**" to add extra email addresses.

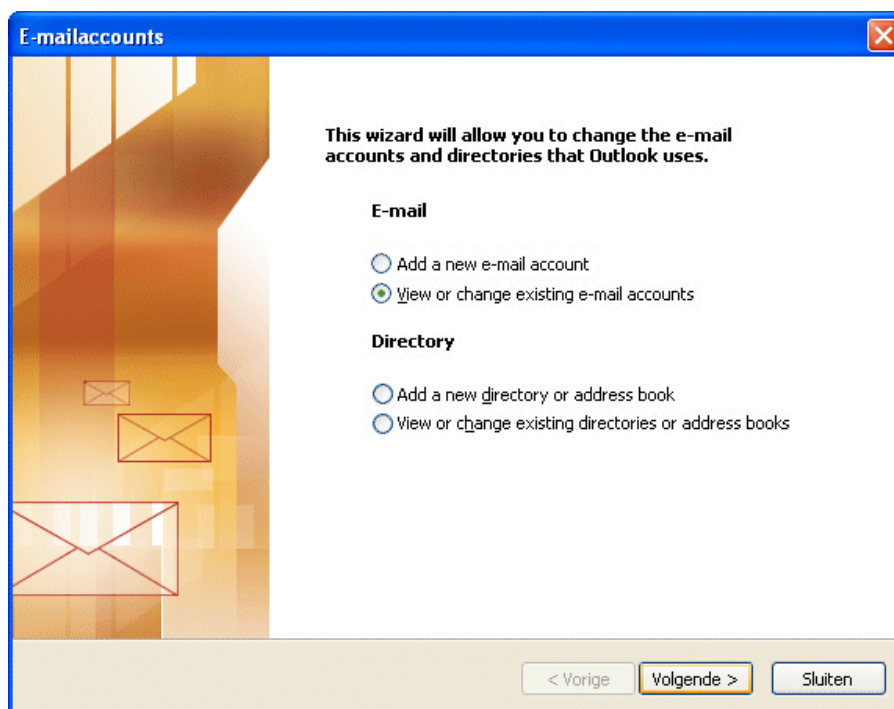
Accounts with unlimited senders can also register domain names to their accounts. When a domain name is registered to your account, you will no longer have to specify each email address from that domain separately and all possible email addresses from that domain will automatically be registered and validated.

After saving extra email addresses and/or domain names, you will receive an email message from our server with a verification link. Click on this link or enter the verification code directly. The address will now have the status "**Verified**" and can now be used with your Travel SMTP account.



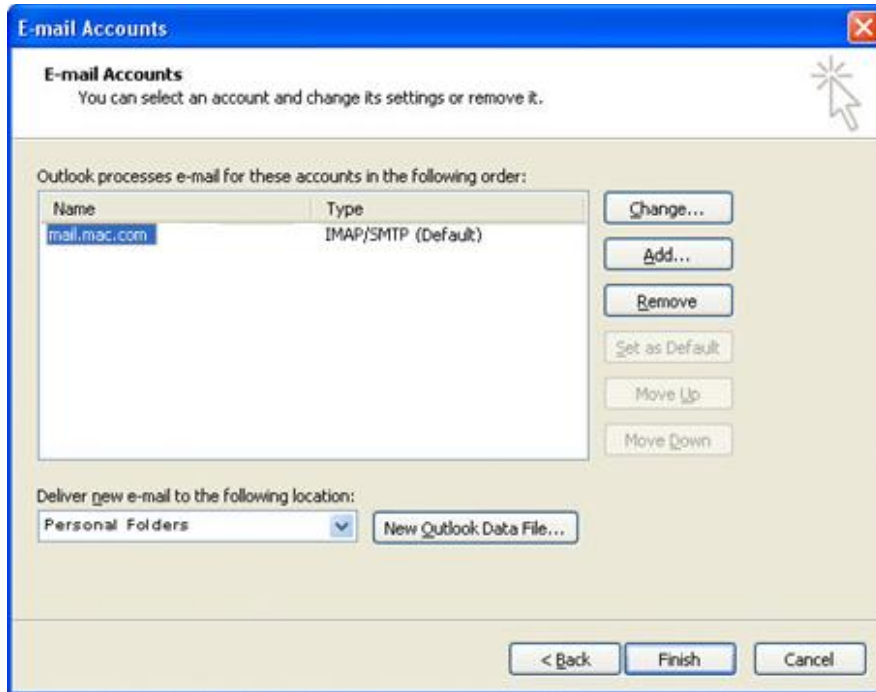
### Step 1:

Go to **Tools** in the main menu bar and choose **Email Accounts**.



### Step 2:

Select the option **View or change existing e-mail accounts** and click on **Next**.

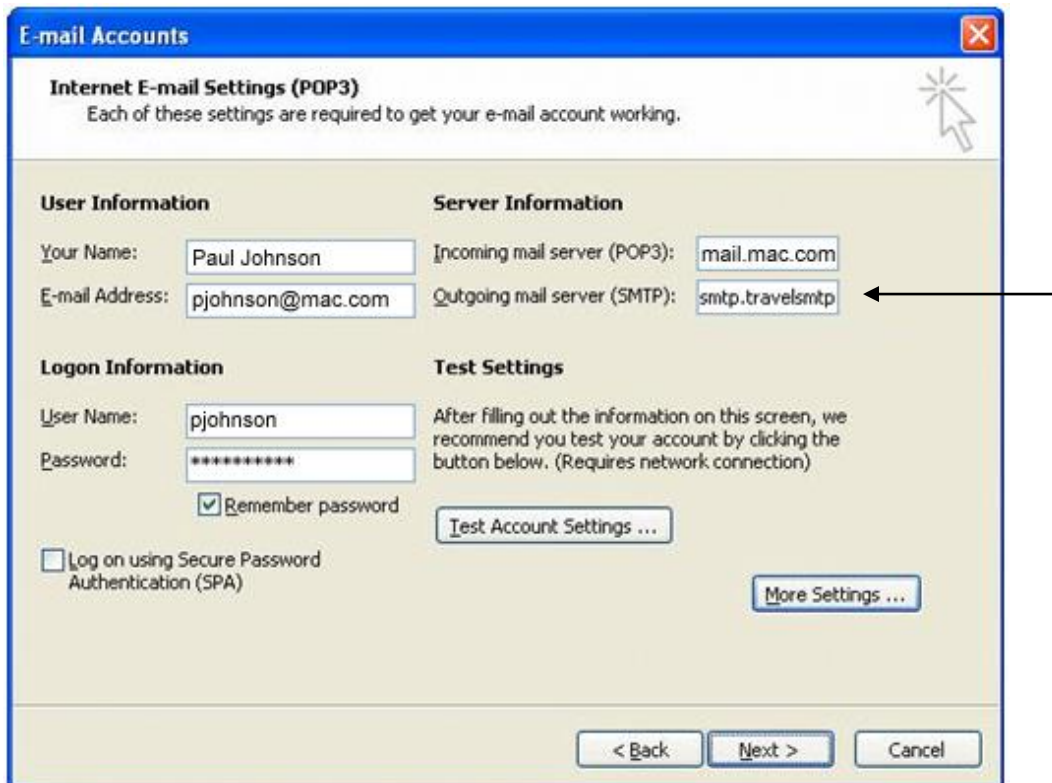


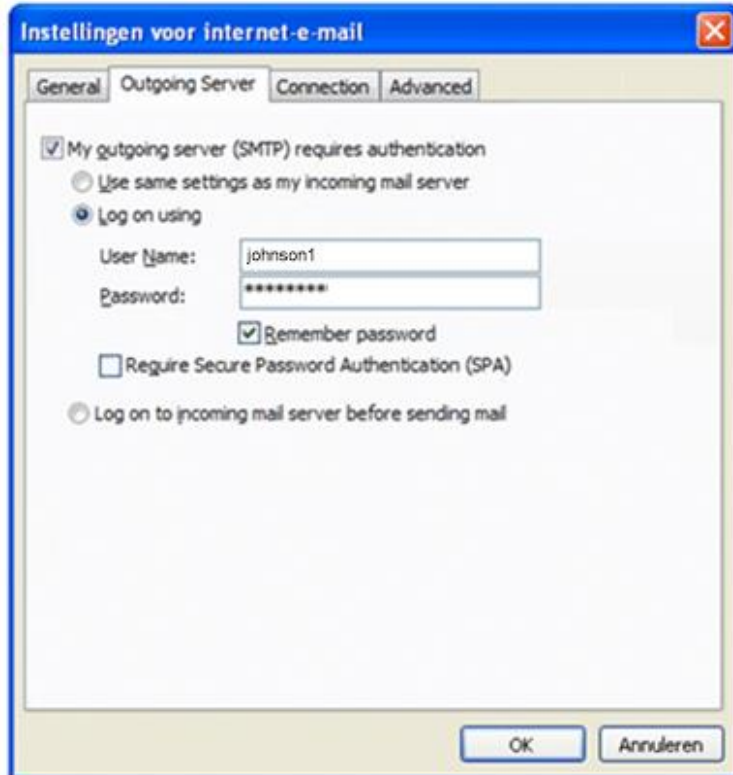
**Step 3:**

Select your default e-mail account and click on the **Change** button:

**Step 4:**

Change the outgoing mail server (SMTP) to *smtp.travelsmtp.com* and then click on the **More Settings** button:





**Step 5:**

Select the **Outgoing Server** tab.

Check the **Log on using** option and enter your login data that you received from us.

Check the option **Remember password**.



**Step 6:**

Select the **Advanced** tab.

Check the option "**This server requires an encrypted connection (SSL)**".

Change the outgoing server (SMTP) port number to **587**.

Double check if the correct port number is entered and click on the **OK** button.

## Tip for domain name owners

When you use your own domain for emailing and want to improve email deliverability, you might want to add SPF records in your domain's DNS. Most webhosting companies provide a DNS tool in the control panel you use for managing your domain. For detailed instructions on how to add DNS records for your domain, please consult your webhosting provider or your control panel's manual.

If you do not yet have SPF records added for your domain, add the following two records of type TXT and SPF:

**@    IN    TXT    "v=spf1 mx include:travelsmtp.com ?all"**

If you already have a SPF record in your DNS, just add the ***include:travelsmtp.com*** part to the existing record.

# Possible configurations

The following port numbers and encryptions are possible with Microsoft Outlook 2003:

Description:	Server address:	Port:	Encryption:
<b>Default TLS configuration</b>	smtp.travelsmtp.com	587	With or without SSL
<b>Optional</b>	smtp.travelsmtp.com	2525	With or without SSL
<b>Default SSL configuration</b>	smtp.travelsmtp.com	465	SSL
<b>Firewall-proof configuration</b>	smtp80.travelsmtp.com	80	With or without SSL
<b>Firewall-proof SSL configuration</b>	smtp80.travelsmtp.com	443	SSL

The above options are all tested and working on Microsoft Outlook 2003. This means that in case one of the options do not work for you, there either is a mistake in your configuration (in that case, please check the FAQ on our website for help with configuration problems), or the network you are using is blocking particular communication. In the last case, you will need to use the firewall-proof option on port 443.

## What configuration should I use?

It is recommended to use an encrypted connection (SSL). When using an encrypted connection, the communication from your computer to the Travel SMTP server will be secured and unreadable for others other than the receiver of your email. In particular when you work on public networks like WiFi hotspots, this is the recommended option.

Sometimes the default SMTP ports are being blocked by firewalls, for example in hotels or campsites, or in areas like China. In that case, you will need to use one of our firewall-proof configurations (port 443 is recommended over port 80).

In this manual we will use the default TLS configuration on port 587. If you chose to work with one of the other possible configurations listed above, then change the server address and corresponding port number in **step 4** and **step 6**, as listed in the above table.